

# Appendix 4 – Relevant Maps and Figures

---

New High School for Leppington and Denham  
Court

## Acknowledgement of Country

The NSW Department of Education acknowledges Dharug Peoples, the traditional custodians of the land on which a New High School for Leppington and Denham Court is proposed.

We pay our respects to their Elders past and present and celebrate the diversity of Aboriginal people and their ongoing cultures and connections to the lands and waters of Australia.

The NSW Department of Education is committed to honouring Aboriginal peoples' cultural and spiritual connections to the land, waters and seas and their rich contribution to society.

The NSW Department of Education recognises that by acknowledging our past, we are laying the groundwork for a future that embraces all Australians; a future based on mutual respect and shared responsibility.

## 1. Relevant Maps and Figures



Figure 1: Site boundaries (Source: Gyde Consulting, adapted from Survey Plan at Appendix 2 and NSW Planning Portal Spatial Viewer)



**Figure 2: Aerial image of the site (Source: Nearmap, taken 23 November 2024)**



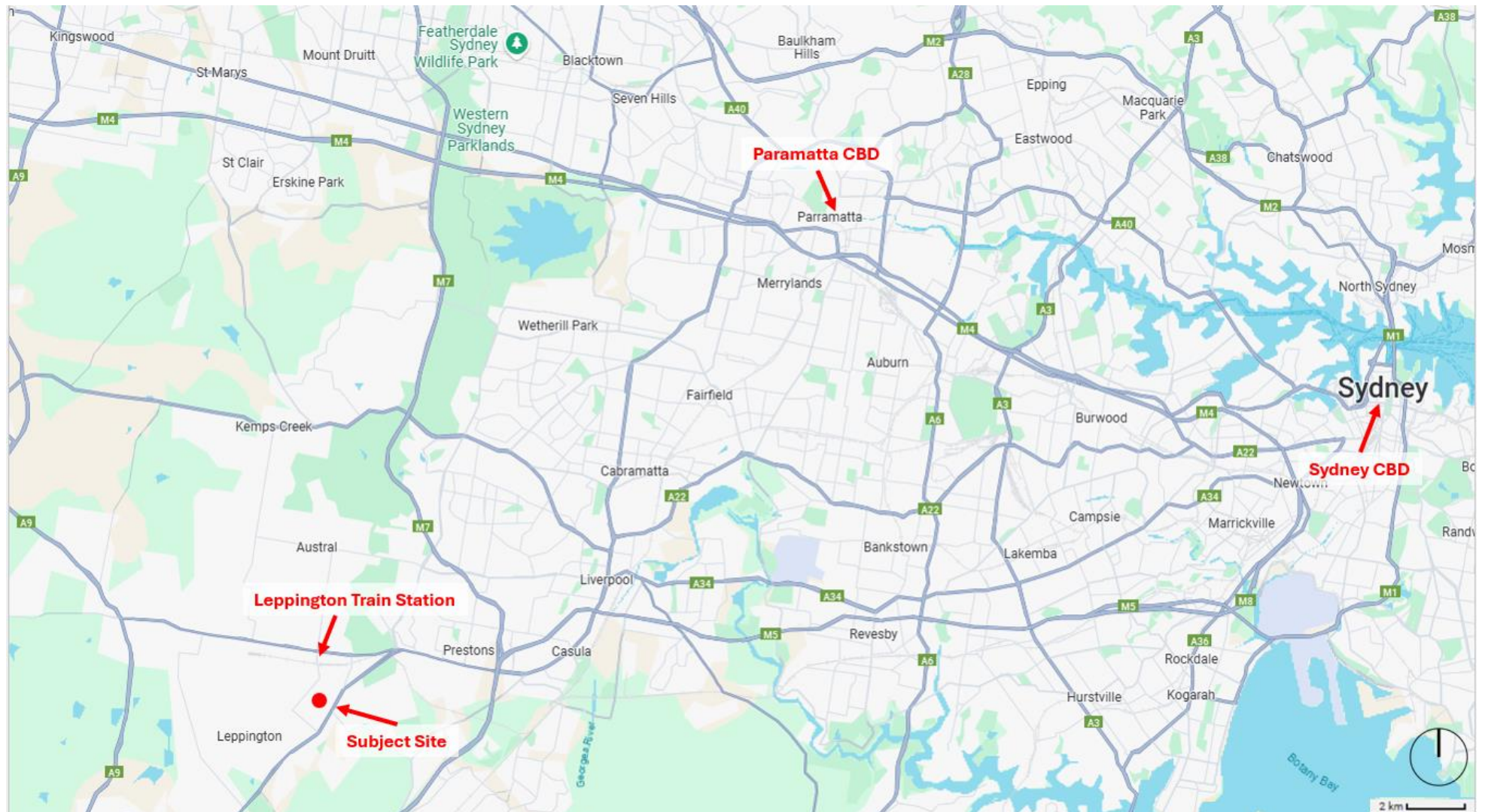


Figure 3: Locality plan showing the regional context of the site (Source: Gyde Consulting, adapted from Google Maps)



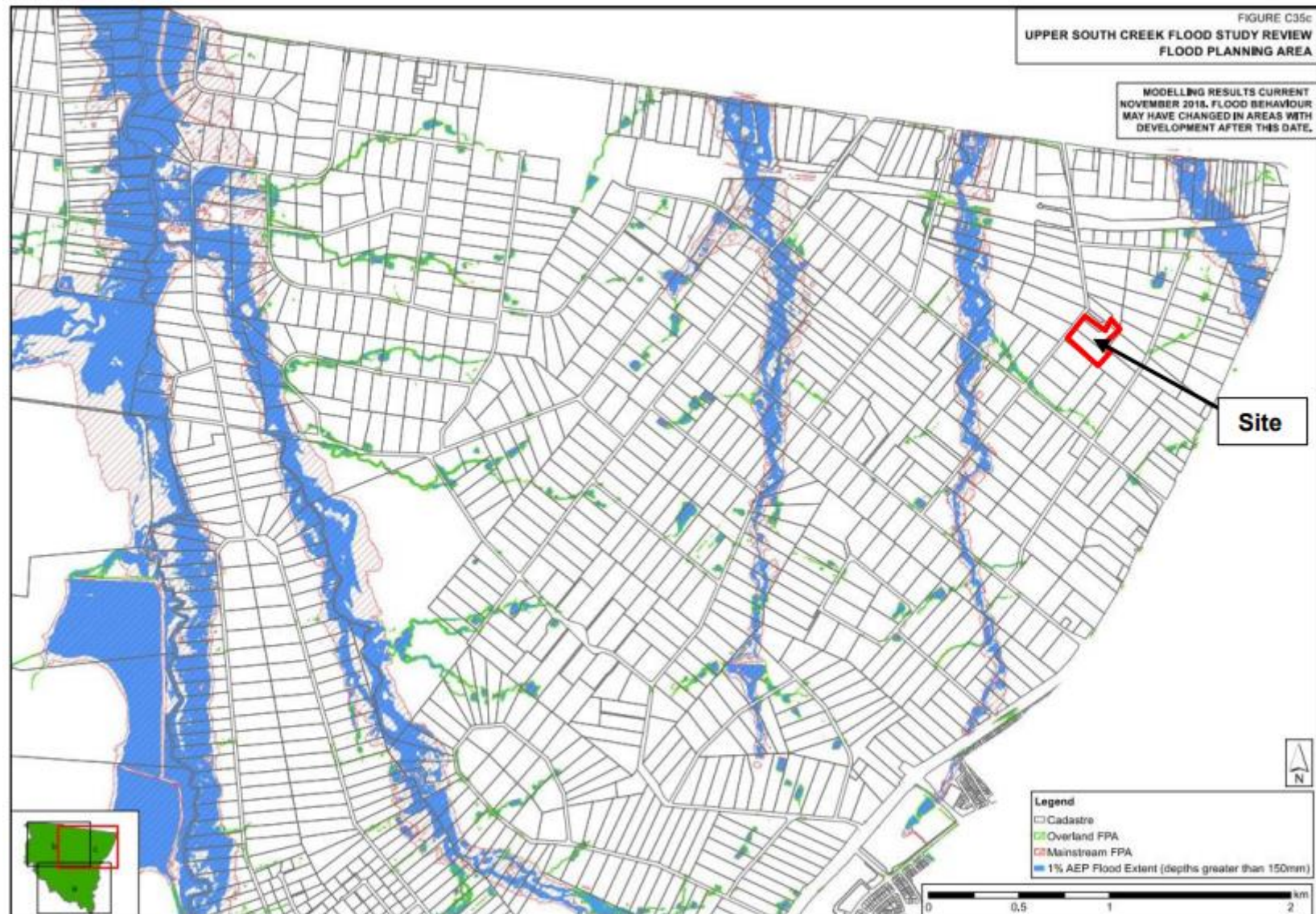
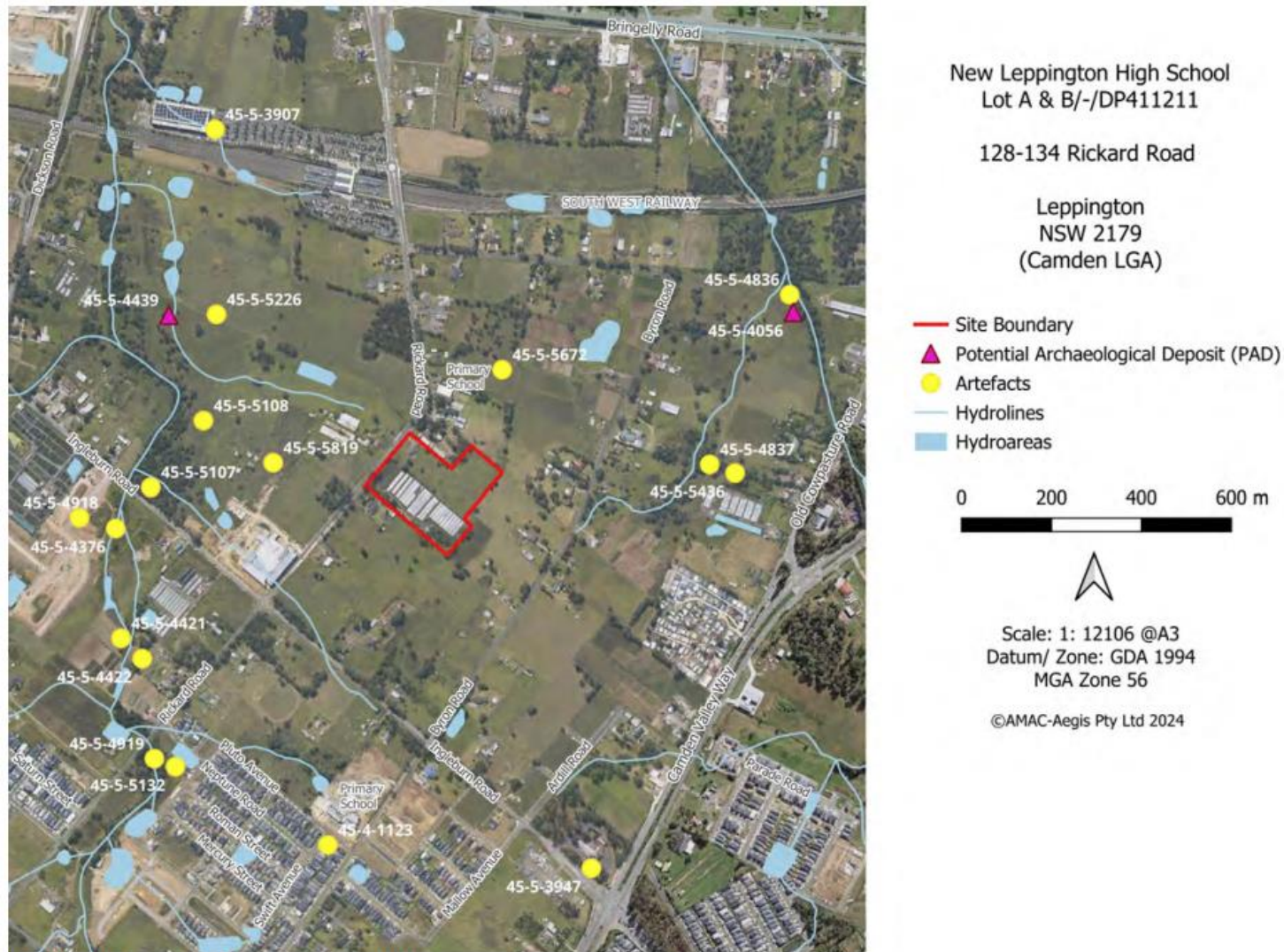


Figure 4: Upper South Creek Flood Study Review – Flood Planning Area (Source: WMAwater 2022)



Figure 5: Drinking Water Catchment Map (Source: NSW Planning Portal Spatial Viewer)





**Figure 4-1 AHIMS Search Results.**  
AMAC Group. Six Maps. LRS Online (accessed 04/07/2024).

**Figure 6: AHIMS Search Results (Source: AMAC Archaeological)**



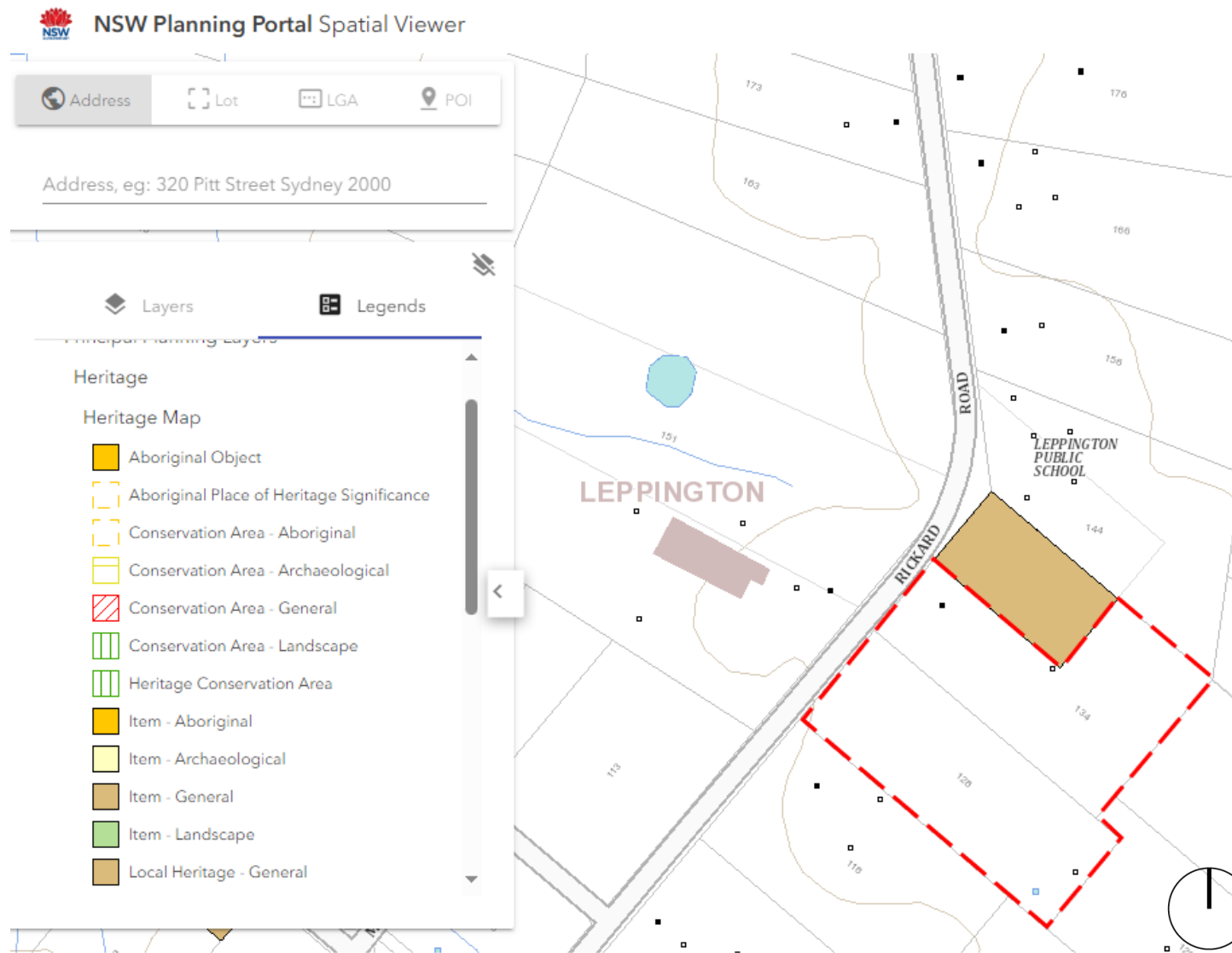


Figure 7: Heritage Mapping (Map Source: NSW Planning Portal Spatial Viewer)

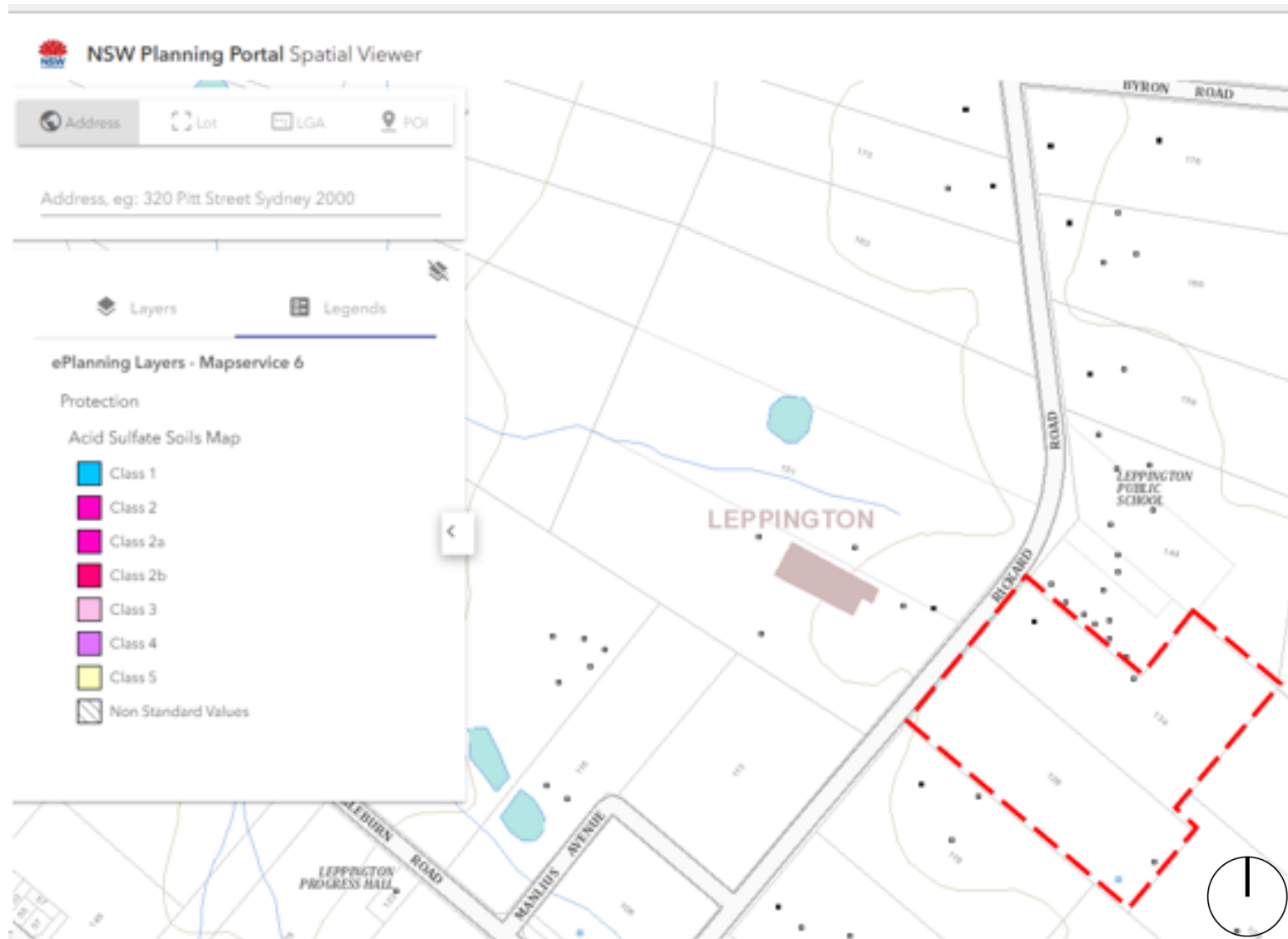


Figure 8: Acid Sulfate Soils Mapping (Map Source: NSW Planning Portal Spatial Viewer)



Figure 9: Salinity Mapping (Map Source: NSW Planning Portal Spatial Viewer)

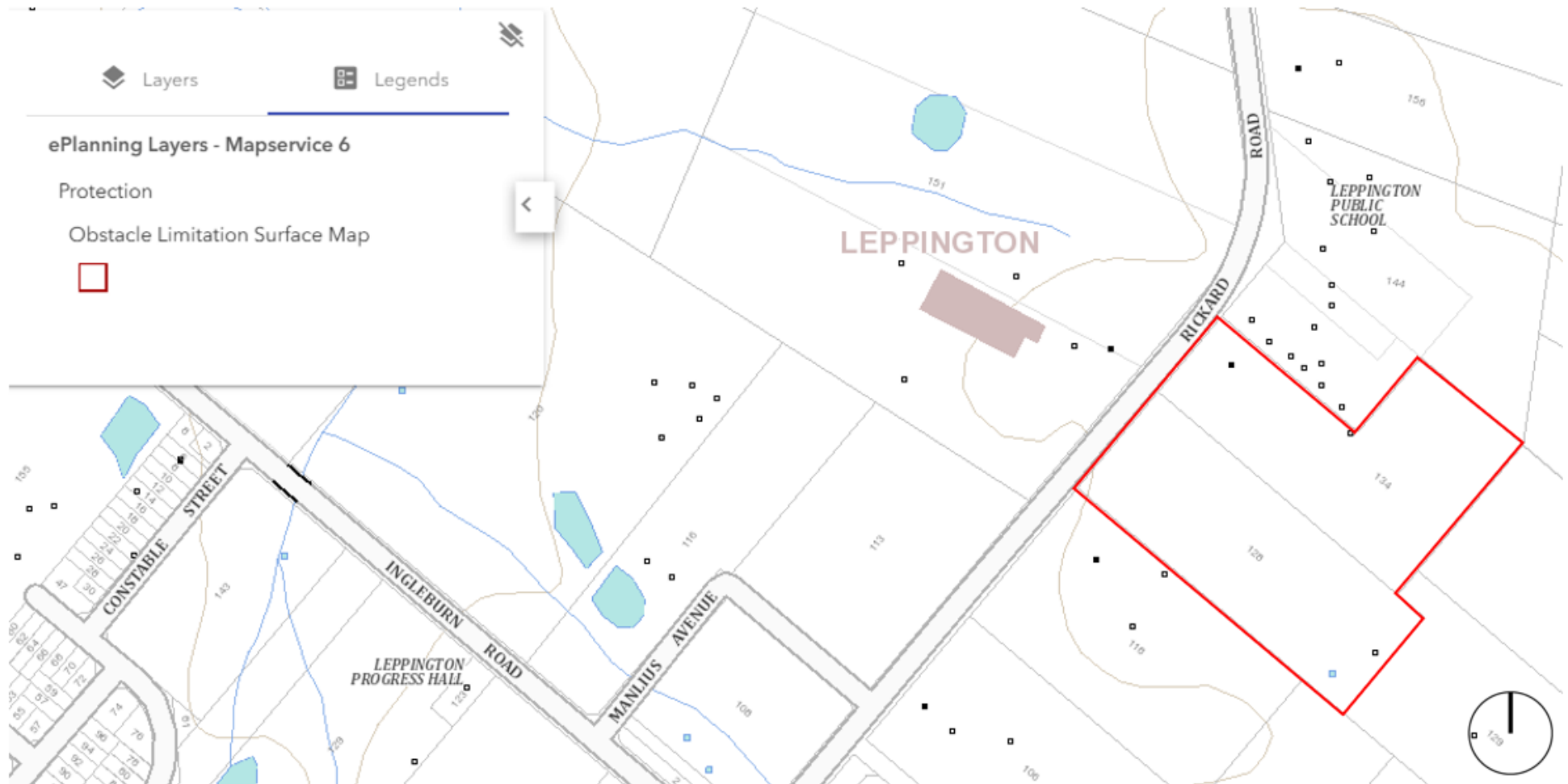




Figure 10: Bushfire Prone Land Mapping (Map Source: NSW Planning Portal Spatial Viewer)



Figure 11: Site Location and Designated Bushfire Prone Land (Source: Blackash Bushfire Consulting)



**Figure 12: Obstacle Limitation Surface Mapping (Map Source: NSW Planning Portal Spatial Viewer)**



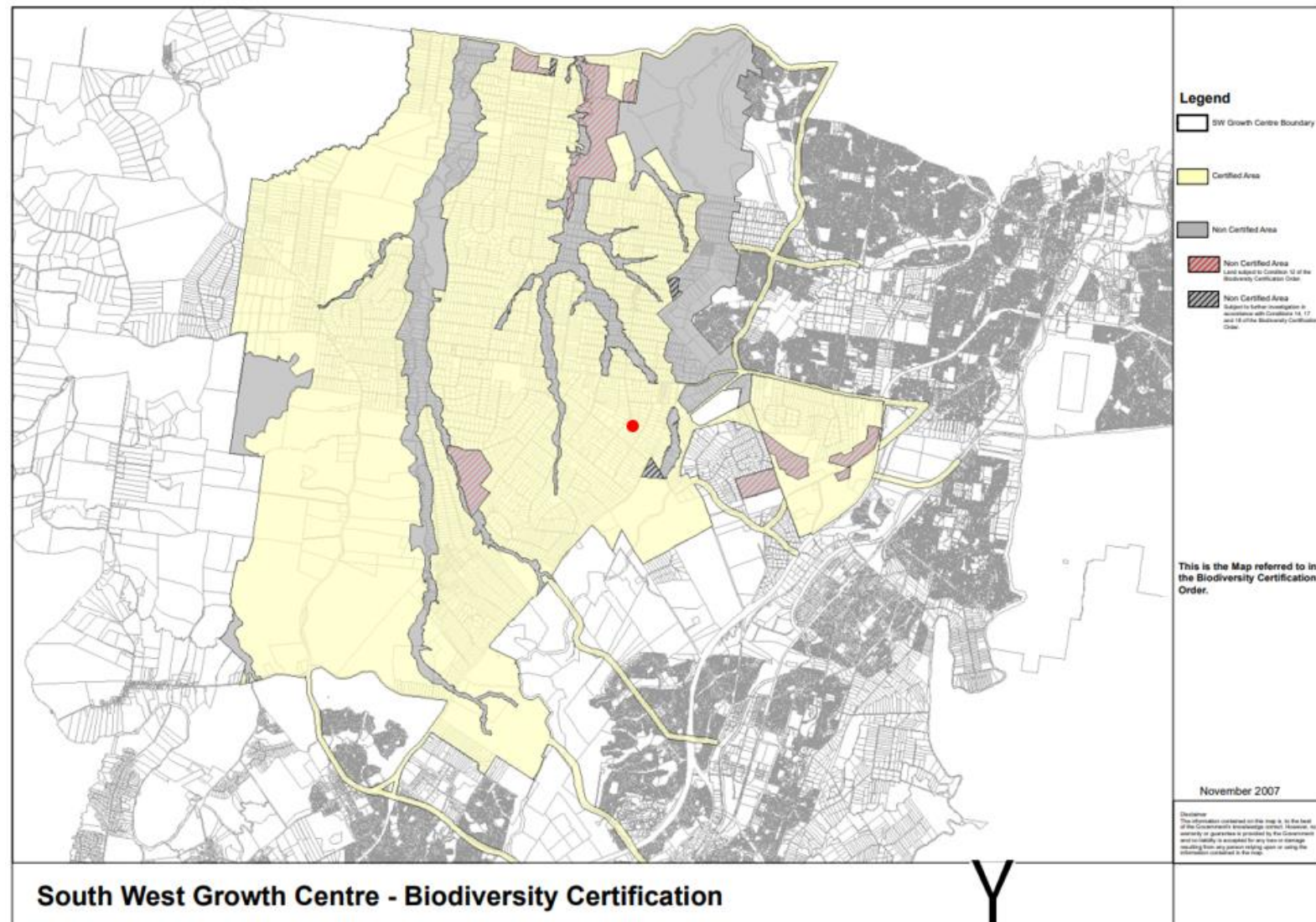
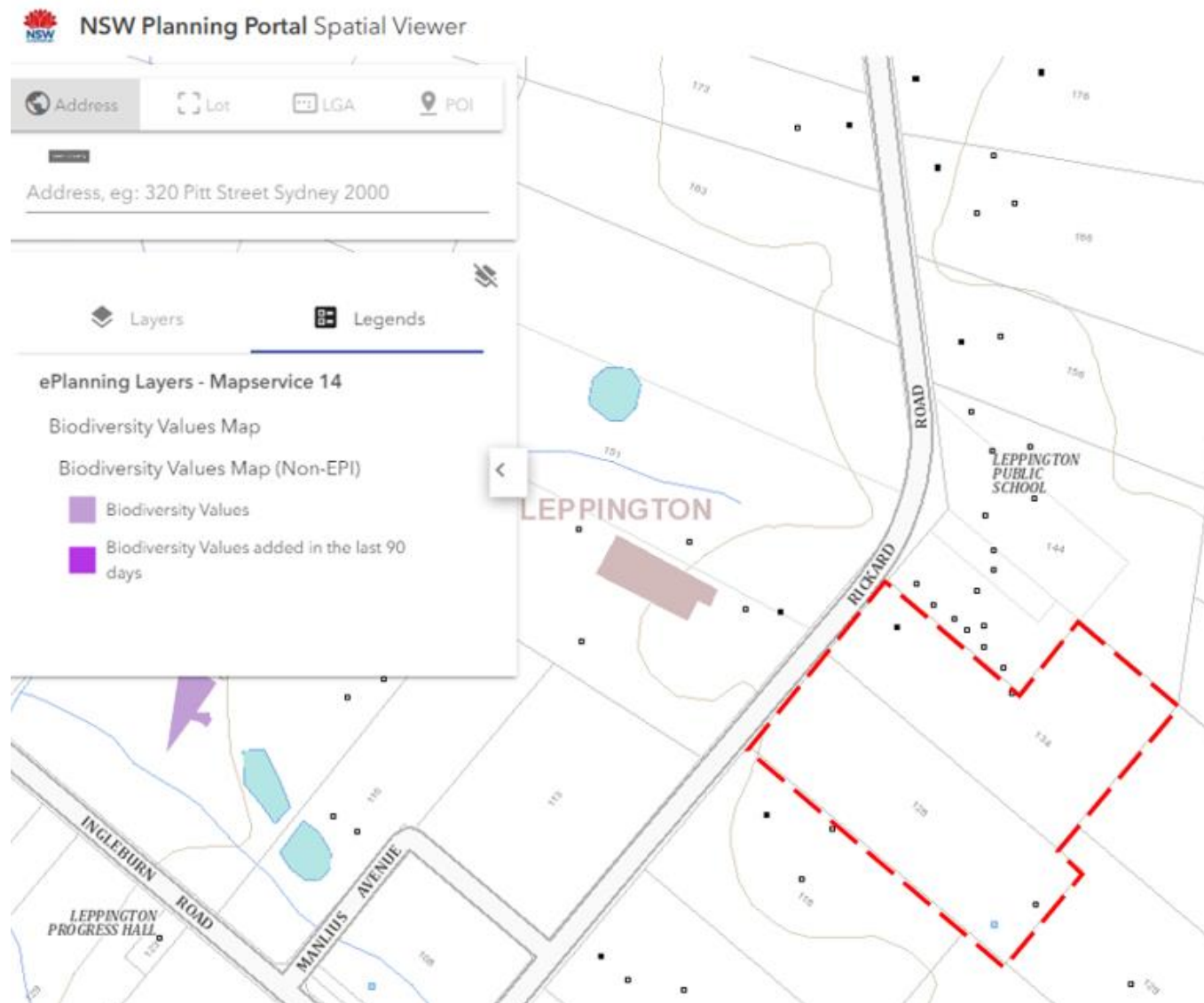
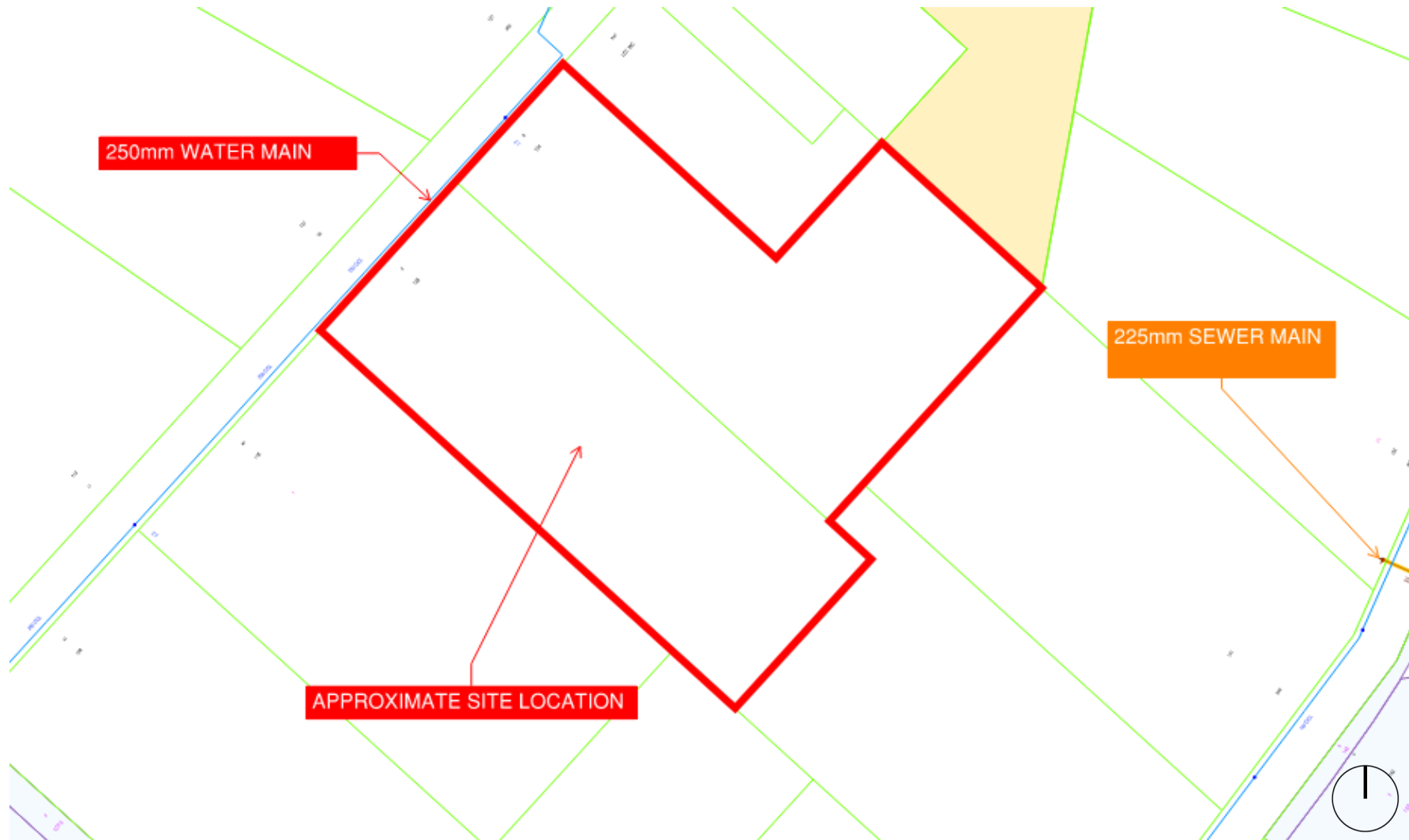


Figure 13: SWGA Biodiversity Certification Map with site identified with red dot (Source: Biodiversity Certification Order)



**Figure 14: Biodiversity Values Mapping (Map Source: NSW Planning Portal Spatial Viewer)**



**Figure 15: Existing utility sewer and water mains surrounding the site (Source: WSCE)**